

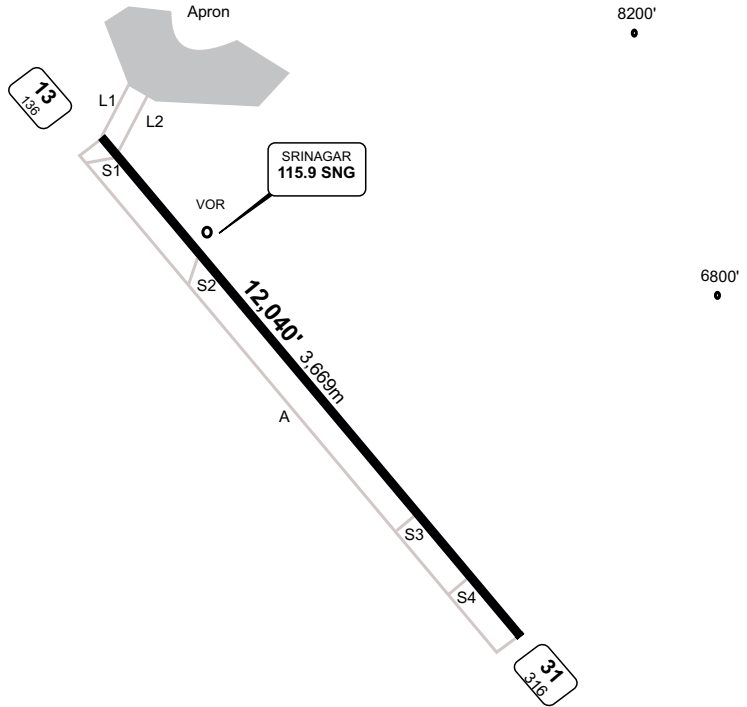
**VISR / SXR**  
**SHEIKH UL ALAM AIRPORT**  
*Apt Elev 5,445'*

01 FEB 12

**SRINAGAR, INDIA**

**SRINAGAR TOWER**  
**122.70**

**SRINAGAR APPROACH**  
**122.30**



**CAUTION:**  
 Do not mistake Awantipur Airport for Srinagar which has similar runway alignment. Approx R165 at 11 DME SNG VOR.

**Additional Runway Information**

RWY		TAKEOFF	LANDING	WIDTH
13	PAPI-L (Angle 3.00)	12,040' 3,669m	12,040' 3,669m	148' 45m
31	PAPI-L (Angle 3.00)	12,040' 3,669m	12,040' 3,669m	148' 45m