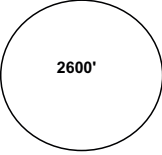


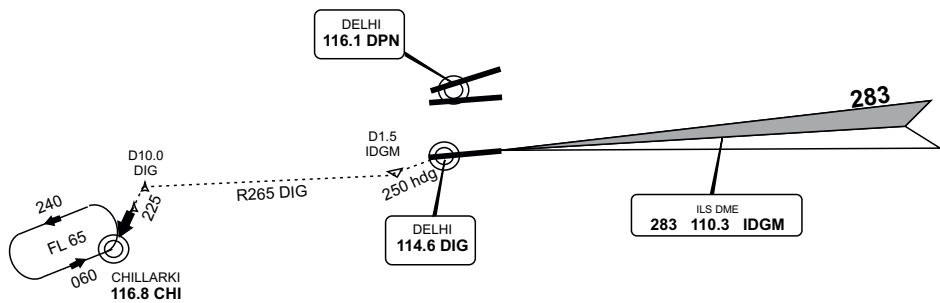
**VIDP / DEL
INDIRA GANDHI INTL.**

01 FEB 12

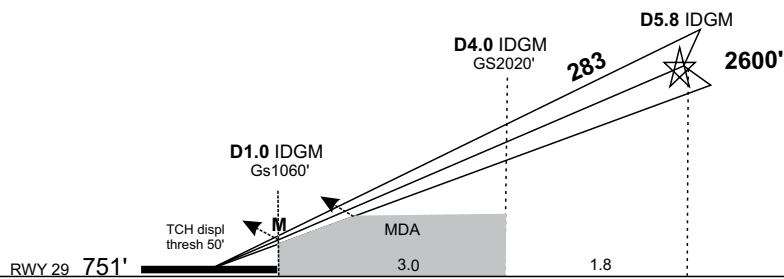
**DELHI, INDIA
ILS RWY 29**

APPROACH 126.35		TOWER 118.10		GROUND 121.90		 2600'
LOC IDGM 110.30	Final Apch Crs 283	GS D4.0 IDGM 2020' (1269')	ILS DA(H) 951' (200')	Elevation 777'		
MISSED APCH : Climb STRAIGHT AHEAD. At 1.5 IDGM turn LEFT onto heading 250. Intercept radial R-265 DIG climbing to 2600'. At 10. 0 DIG turn LEFT to CHI VOR via R-045 CHI inbound. At D11.0 CHI climb to FL65 to join holding, or as directed.						MSA DPN VOR

Alt set : Hpa Rwy Elev : 28 Hpa Trans Level: By ATC Trans Alt : 4000'



LOC (GS OUT)	IDGM DME	2.0	3.0	4.0	5.0	5.8
	ALTITUDE	1380'	1700'	2020'	2340'	2600'



Gnd Sped - Kts	70	100	120	140	160	D 1.5 IDGM	250 hdg ↑ LT
ILS GS or LOC Descent Angle	3.00	377	539	647	755		
MAP at D 1.0 IDGM							

STRAIGHT IN LANDING RWY 29					CIRCLE TO LAND Not Authorized North of Airport		
	ILS DA(H) 951' (200') FULL TDZ or CL out ALS out		LOC (GS out) MDA(H) 1280' (529) ALS out		MDA(H)		
A	RVR 550m VIS 800m	RVR 720m VIS 800m	RVR 1200m	RVR 1600m	CMV 2400m	1470' (693')	3600m
B				RVR 2000m	CMV 2800m	1570' (793')	4400m
D				CMV 2800m	CMV 3600m	1470' (693')	4800m