

Chandigarh Approach
118.60

Chandigarh Tower
118.30 / 122.30

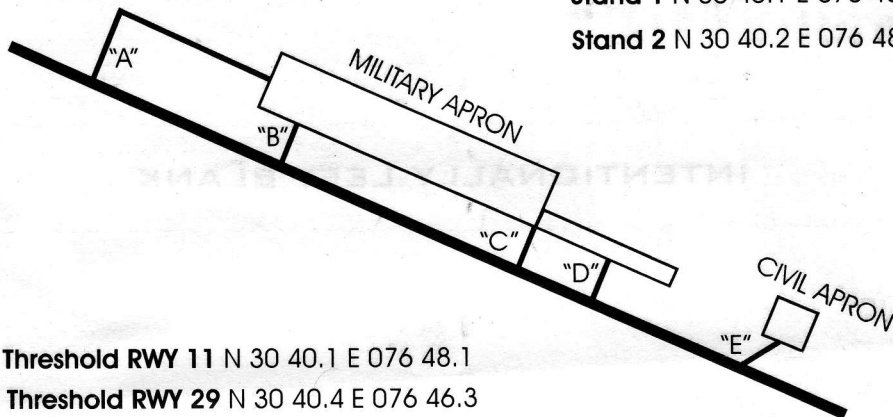
CHG VOR N 30 40.0 E 076 48.2

CHG NDB N 30 41.0 E 076 45.5

CG NDB N 30 39.6 E 076 47.6

Stand 1 N 30 40.1 E 076 48.1

Stand 2 N 30 40.2 E 076 48.1



Threshold RWY 11 N 30 40.1 E 076 48.1

Threshold RWY 29 N 30 40.4 E 076 46.3

Additional Runway Information:

	TORA	TODA	ASDA	LDA	ELEV	OVERRUN
RWY 11 (114°)	2960	2960	2960	2744	1028'	216
RWY 29 (295°)	2960	2960	2960	2744	1028'	216

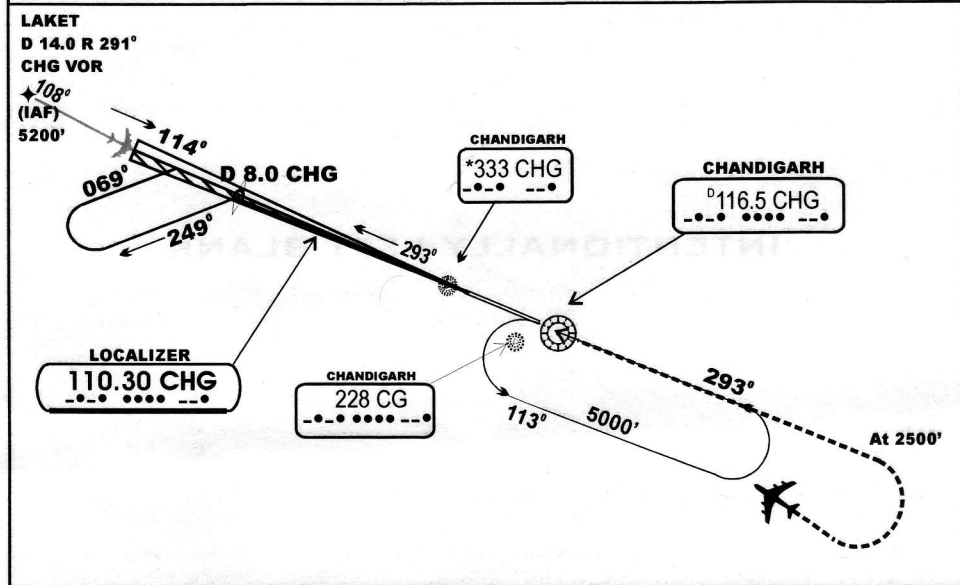
APP & AIRFIELD LIGHTING:

RWY 11: PAPI (L); HIRL REIL OWL LT APL

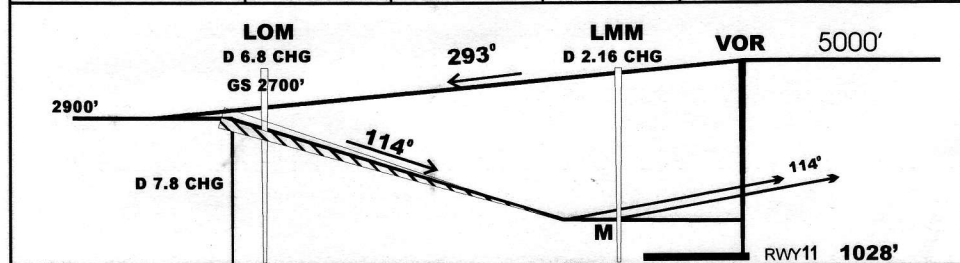
RWY 29: PAPI (L); HIRL REIL OWL LT APL

Chandigarh Approach 118.60			Chandigarh Tower 118.30 / 122.30		
LOCALIZER CHG 110.30	Final Apch Crs 114°	GS OM 2700'	MAP LMM	Apt Elev 1030' RWY 1028'	
<p>MISSED APCH: Climb STRAIGHT AHEAD to 2500', then climbing turn RIGHT to CHG VOR to join holding at 5000', or as directed.</p>					MSA CHG VOR

Alt Set: hPa Rwy Elev: 11 hPa Trans level: By ATC Trans alt: 10000'



CHG DME	7.0	6.0	5.0	4.0	3.0
Altitude (Ft)	2780'	2460'	2150'	1830'	1500'



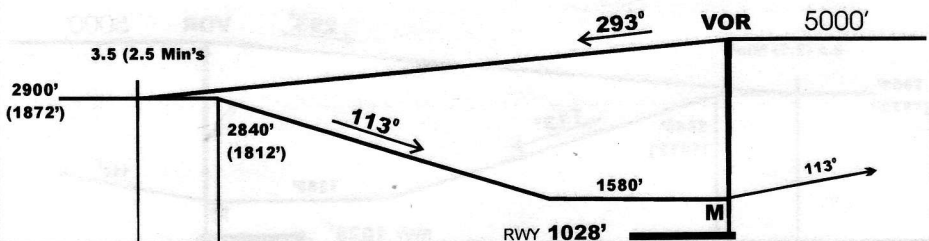
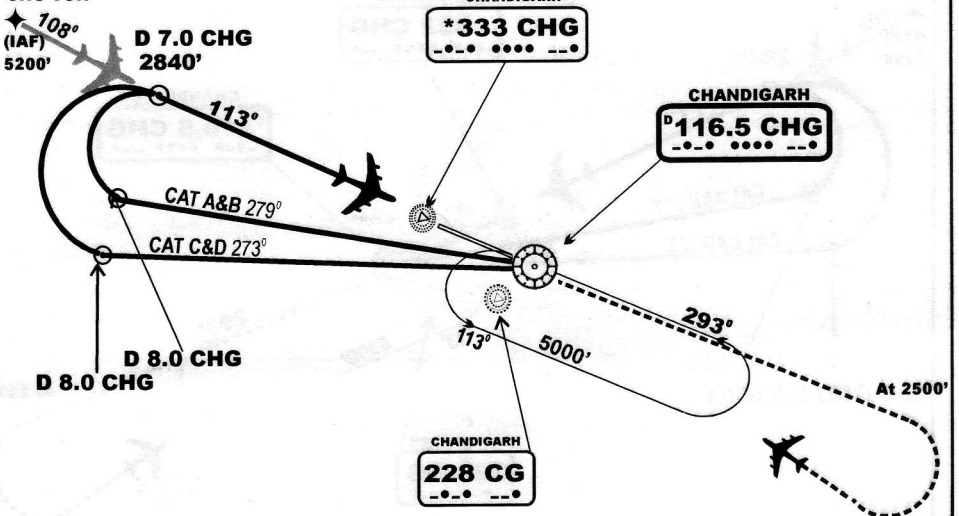
MDA (H):	ILS	LOC (GS Out)	CIRCLE - TO - LAND AVOID VISUAL CIRCLING OVER CHANDIGARH TOWN
A	1240' (211')	1540' (511')	A 1590' (560')
B	1250' (221')		B 1590' (560')
C	1260' (231')		C 1880' (850')

Chandigarh Approach 118.60		Chandigarh Tower 118.30 / 122.30	
DVOR CHG 116.50	Final Apch Crs 113°	MDA (H) 1580' (550')	Apt Elev 1030' RWY 1028'
<p>MISSED APCH: Climb STRAIGHT AHEAD to 2500', then climbing turn RIGHT to CHG VOR to join holding at 5000', or as directed.</p>			
MSA CHG VOR			

Alt Set: hPa Rwy Elev: 11 hPa Trans level: By ATC Trans alt: 10000'

LAKET

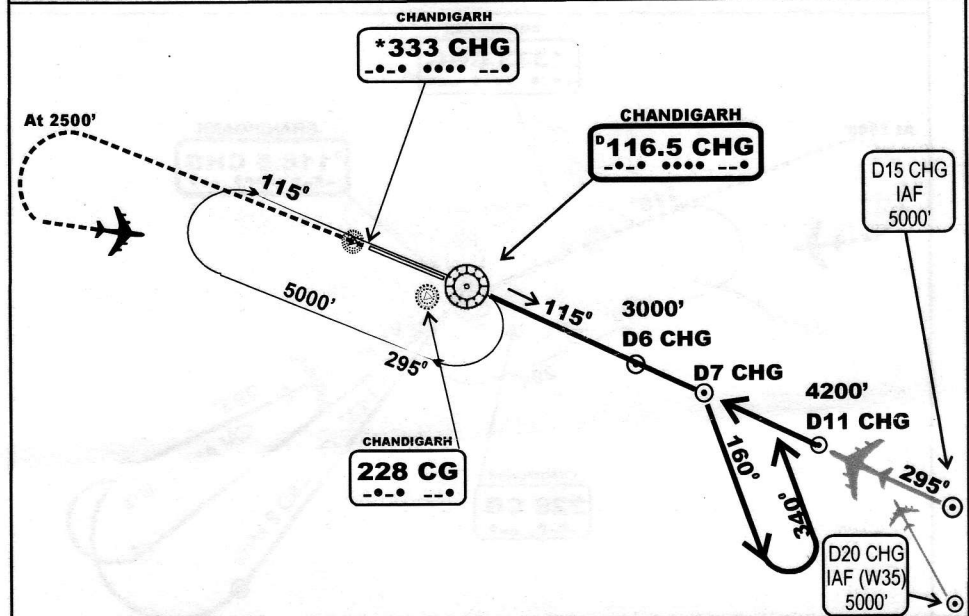
D 14.0 R 291°
CHG VOR



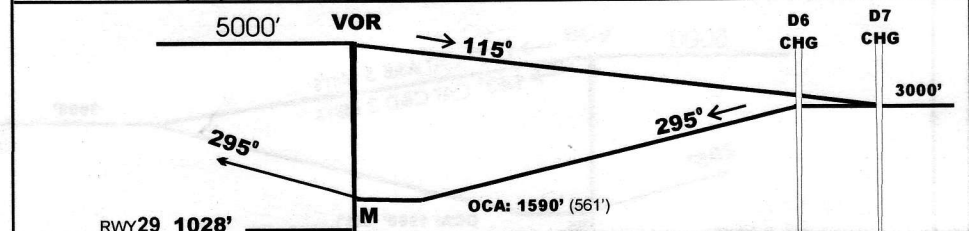
MDA (H): 1580' (550')		CIRCLE - TO - LAND AVOID VISUAL CIRCLING OVER CHANDIGARH TOWN	
A	Visibility 2200 m	A	1590' (560')
B		B	1880' (850')
C		C	1880' (850')

Chandigarh Approach 118.60		Chandigarh Tower 118.30 / 122.30		
DVOR CHG 116.50	Final Apch Crs 295°	MDA (H) 1430' (401')	Apt Elev 1030' RWY 1028'	
<p>MISSED APCH: Climb STRAIGHT AHEAD to 2500', then climbing turn LEFT to CHG VOR to join holding at 5000', or as directed.</p>				MSA CHG VOR

Alt Set: hPa Rwy Elev: 11 hPA Trans level: By ATC Trans alt: 10000'



CHG DME	6.0	5.0	4.0	3.0	2.0
Altitude (Ft)	3000'	2680'	2360'	2-400'	1720'



MDA (H): 1590' (561')		CIRCLE - TO - LAND AVOID VISUAL CIRCLING OVER CHANDIGARH TOWN	
A	Visibility 2200 m	A	1590' (561')
B		B	1880' (851')
C		C	1880' (851')